

# The Weston Manor



*A Better Home. A Better Lifestyle.*

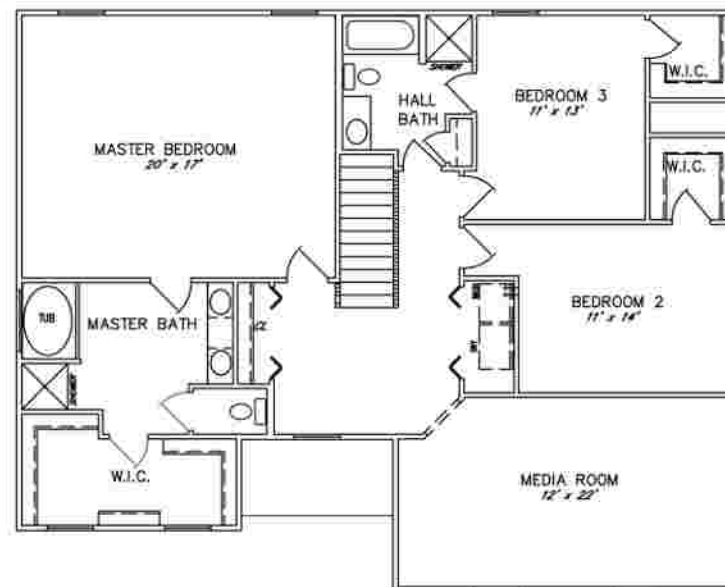
# The Weston



MAIN FLOOR PLAN



See additional Covington Homes floor plans, maps, community information, model home information and more at [www.CovingtonHomes.info](http://www.CovingtonHomes.info)



SECOND FLOOR PLAN

The Weston Manor radiates convenience and luxury. The spacious main level features a large living room, parlor or office and dining room as well as masterfully designed kitchen

featuring an island bar and built-in pantry. Upstairs you'll find three well appointed bedrooms, a relaxing master suite with a roomy walk in closet, and a large media room that can become your

fourth bedroom.

SQUARE FOOTAGE	
MAIN	1106
SECOND	1646
<b>TOTAL</b>	<b>2752</b>